



azbecon

Building a Better Tomorrow

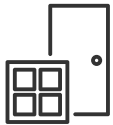
OPENINGS,
ACCESS & SAFETY
FEATURES



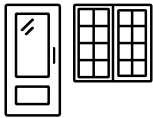
OPENINGS, ACCESS & SAFETY FEATURES

High-quality windows, doors, and safety structures engineered for performance, security, and architectural appeal.

Includes: UPVC Windows & Doors, Aluminum Windows & doors, Shutters, fire exit doors, fire exit stairs.



UPVC
Windows &
Doors



Aluminum
Windows &
Doors



Shutters



Fire Exit Door



Fire Exit
Stairs

✓ High-Quality Windows & Doors

✓ Performance & Security

✓ Safety Structures

✓ Architectural Appeal



Subcategory	Description	Materials Used	Technical Features	Design Options / Finishes	Applications / Use Cases
UPVC Windows & Doors	Energy-efficient, weather-resistant windows & doors with long service life.	UPVC profiles, Double/triple-glazed glass, EPDM seals, SS/Aluminum hardware, Galvanized steel inserts	Thermal & sound insulation, Multi-point locking, 100% UV & weather proof, Fire-retardant, Low maintenance	White/grey/custom colors, Wood-grain finish, Clear/tinted/frosted/reflective glass, Casement/sliding/tilt-turn/fixed	Homes, Offices, Schools, Hotels
Aluminum Windows & Doors	Durable, sleek systems with modern look and flexibility.	Aluminum profiles (powder-coated/anodized), Glass panels, EPDM seals, SS/zinc/brass fittings, Silicone sealants	Strong yet lightweight, Corrosion/weather resistant, Supports large spans, Thermal break option, Low maintenance	Anodized/powder finishes, Clear/frosted/tinted/reflective glass, Sliding/hinged/pivot/folding/fixed	Commercial, High-rise, Villas, Public buildings
Shutters	Functional shutters for security, privacy, and control.	Galvanized steel, Aluminum, Polycarbonate, SS components	Manual/motorized, Weather-resistant, Lockable security, Noise reduction	Powder-coated colors, Solid/perforated/transparent panels, Roller/sliding/folding	Shops, Garages, Warehouses, Security enclosures
Fire Exit Door	Safety-certified fire doors ensuring emergency egress.	Galvanized steel, Fire-rated cores (mineral wool/gypsum), SS/fire-rated hardware	Fire rating 30–120 min, Panic bar/lever, Self-closing, Smoke seals & strips	Powder-coated safety colors, Single/double leaf, Fire-rated glass vision panels	Offices, Schools, Hospitals, Industries
Fire Exit Stairs	Safe evacuation staircases meeting international codes.	Mild/galvanized steel, Concrete base, Anti-slip grating/treads, Handrails	Fire & corrosion resistant, Non-slip surfaces, Adequate width, Code-compliant	Painted/powder-coated steel, Open/enclosed, Straight/spiral/switchback	High-rises, Factories, Public facilities, Institutions



UPVC Windows & Doors

Description

Weather-resistant, energy-efficient windows and doors made from Unplasticized Polyvinyl Chloride (UPVC), designed for low maintenance and long service life. Suitable for both residential and commercial projects.

Materials Used:

- UPVC profiles
- Double or triple-glazed glass
- EPDM rubber seals
- Stainless steel or aluminum hardware
- Reinforced galvanized steel inserts

Technical Features:

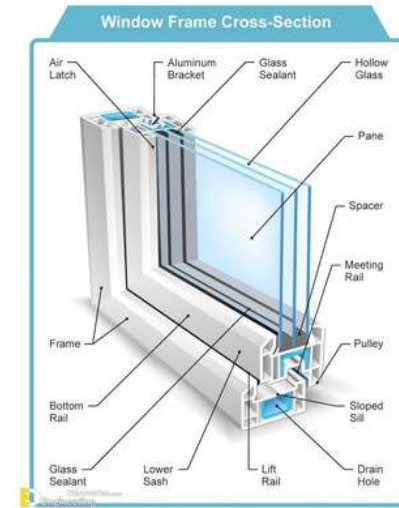
- Excellent thermal and sound insulation
- Multi-point locking systems for enhanced security
- 100% weather and UV resistance
- Fire-retardant properties
- Low maintenance, no painting required

Design Options

- White, grey, or custom color laminated profiles
- Wood-grain textured finishes
- Clear, tinted, frosted, or reflective glass
- Casement, sliding, tilt-and-turn, or fixed designs

Applications

- Homes and apartments
- Office spaces
- Schools and hospitals
- Hotels and resorts



Triple Split



Triple Vertical



Double Top



Crucifix



Twin Vertical



Double Panel





Aluminum Windows & Doors

Description

Durable and sleek architectural window and door systems offering strength, design flexibility, and high resistance to environmental factors. Ideal for modern and large-span openings.

Materials Used:

- Aluminum profiles (powder-coated or anodized)
- Glass panels (single, double, laminated)
- EPDM weather seals
- Stainless steel, zinc, or brass fittings
- Silicone sealants

Technical Features:

- Lightweight yet structurally strong
- Corrosion-resistant and weatherproof
- Minimal maintenance required
- Supports larger glass spans for maximum natural light
- Optional thermal break for energy efficiency

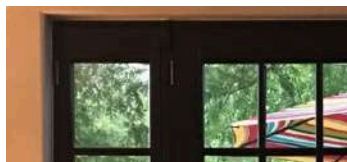
Design Options

- Anodized or powder-coated finishes
- Clear, frosted, tinted, or reflective glass
- Sliding, hinged, pivot, folding, or fixed styles

Applications

- Commercial buildings and showrooms
- High-rise apartments
- Villas and luxury residences
- Educational and public buildings





Shutter Options

Description

Protective and functional shutters for security, privacy, and environmental control in residential and commercial setups.

Materials Used:

- › Galvanized steel
- › Aluminum
- › Polycarbonate panels
- › Stainless steel components

Technical Features:

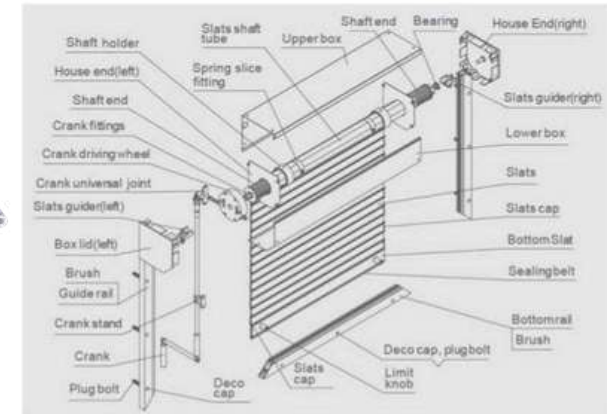
- › Manual or motorized operation
- › Weather-resistant coatings
- › Lockable for enhanced security
- › Noise reduction capability

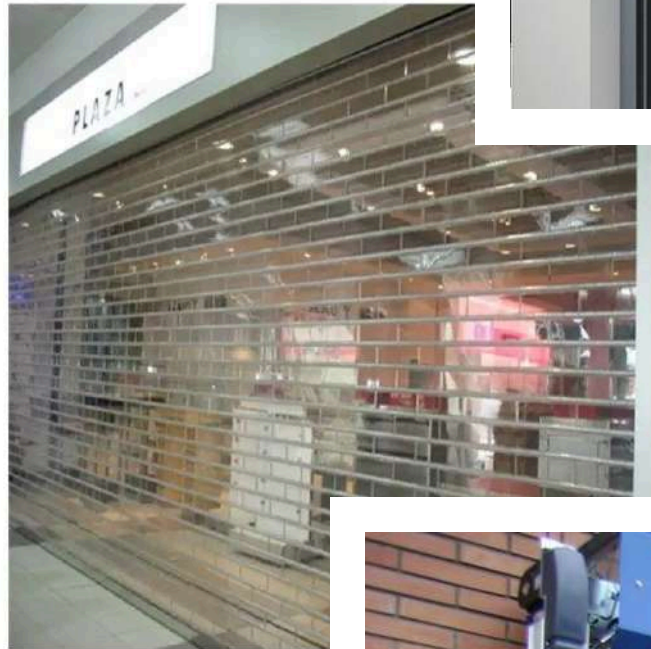
Design Options

- › Powder-coated colors
- › Solid, perforated, or transparent panels
- › Roller, sliding, or folding designs

Applications

- › Storefronts
- › Garages
- › Industrial warehouses
- › Security enclosures

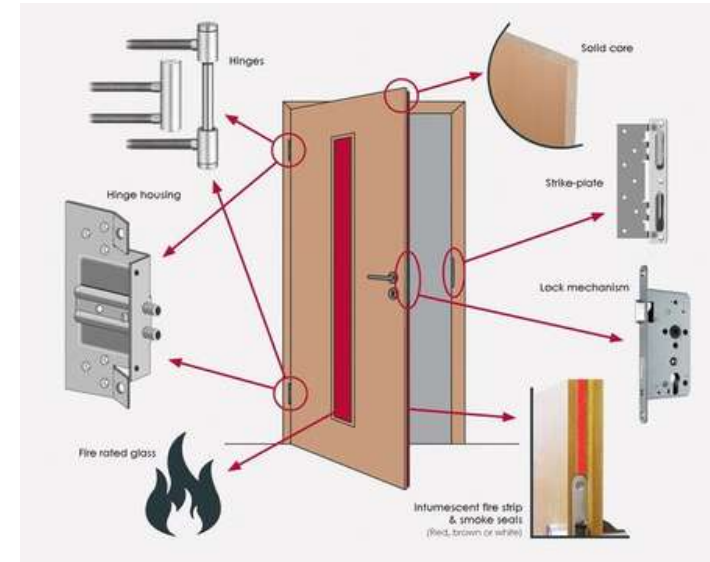




Fire Exit Door

Description

Safety-certified doors designed to provide quick and secure egress in emergency situations while meeting building codes.



Materials Used:

- Galvanized steel sheets
- Fire-rated core material (mineral wool, gypsum)
- Stainless steel or fire-rated hardware

Design Options

- Powder-coated steel in standard safety colors
- Single or double leaf design
- Vision panels with fire-rated glass

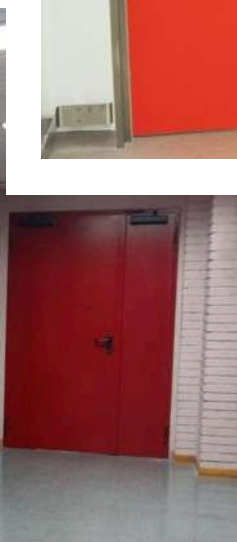
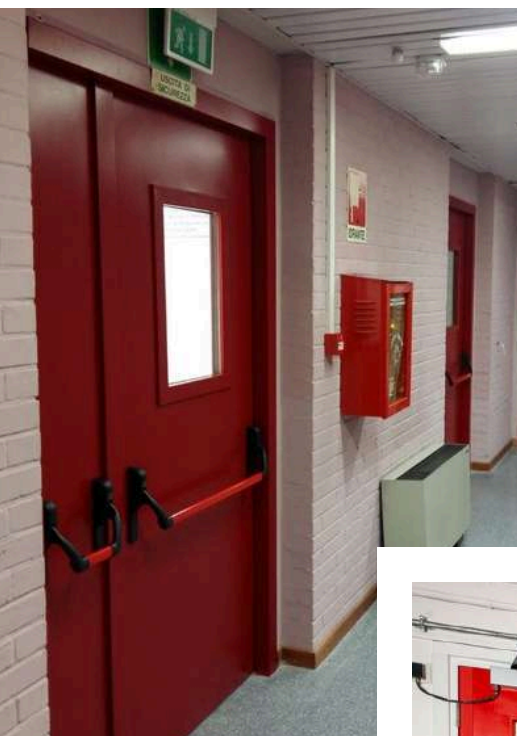
Technical Features:

- Fire resistance rating (30–120 minutes)
- Panic bar/lever handle
- Self-closing mechanism
- Smoke seals and intumescent strips

Applications

- Commercial buildings
- Schools and hospitals
- Industrial facilities
- Public areas





Fire Exit Stair

Description

Dedicated emergency staircases providing safe evacuation routes during fire or emergency incidents.

Materials Used:

- Mild steel or galvanized steel
- Concrete (for structural base)
- Anti-slip grating or treads
- Handrails and balustrades

Technical Features:

- Fire and corrosion resistance
- Non-slip surfaces
- Adequate width for safe evacuation flow
- Meets international safety codes

Design Options

- Painted or powder-coated steel
- Open or enclosed designs
- Straight, spiral, or switchback layouts

Applications

- High-rise buildings
- Industrial plants
- Public facilities
- Educational institutions

